

additional informations:  
 filter colour : impregnated  
 filter weight : 125kg

label:

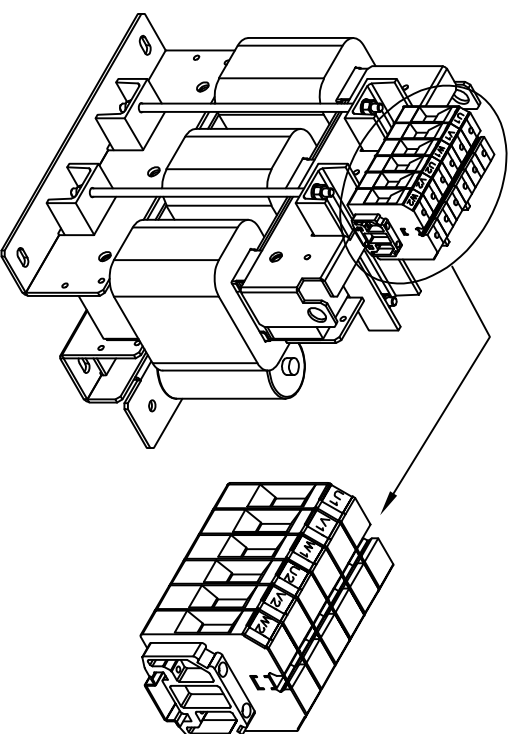
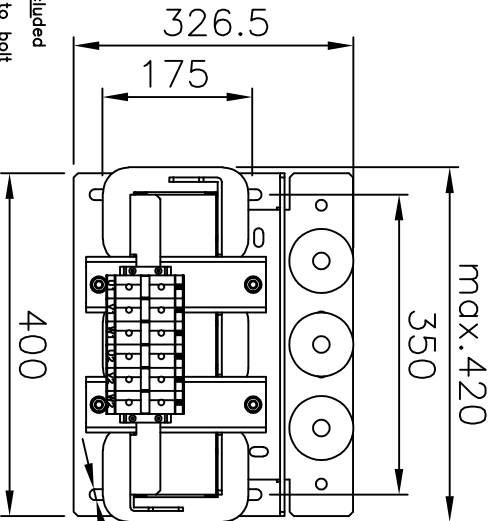
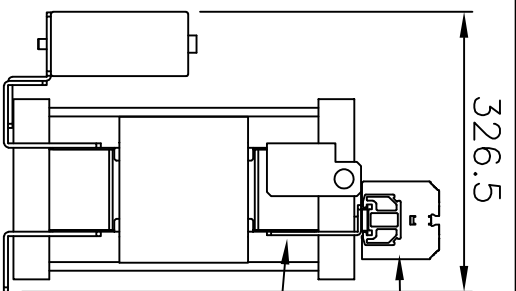
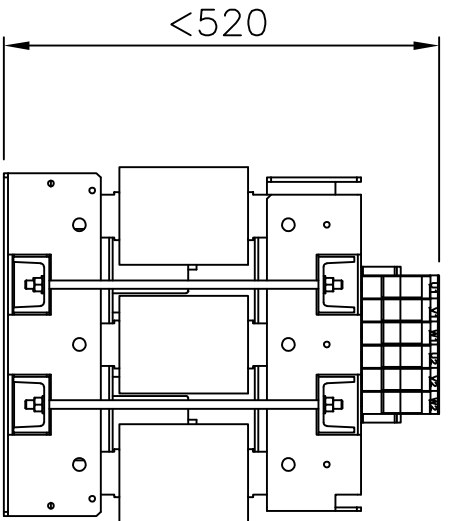
**VLT** MCC 101 sine-wave FILTER  
 www.danfoss.com

TO: MCC 101 1577E008 SAN 0017594188  
 FROM: MCC 101 1577E008 SAN 0017594188  
 3x 625-600V / 50/60Hz (max 1001Hz)  
 3x 115A@90Hz 109A@60Hz 96A@100Hz  
 CHARACTERISTICS: 45°C/115°F  
 \* 1300R4118000150-180\*

Use only with a type 1 or type 2 SFC overvoltage control device

EN 1002053 FA: NR 1002053  
 EN 61558 1-2nd harmonics  
 EN 61558 2-3rd harmonics

DA: NR 0200000  
 DANIELI, GERMANY  
 C=534F  
 S=634H  
 P=665 730M  
 N=1001 12210  
 T=1001 12210  
 terminal 60x120mm  
 only CU



95mm<sup>2</sup> terminal  
 PE bolt M10  
 (2x washer, 1 lock washer, 1 nut)

e	08.05.16	Schr./Fle.	typelabel updated
d	22.12.14	Schr./Fle.	Danfoss Postaddress included typelabel updated
c	11.03.13	Schr./Kor.	cap. connectors changed to bolt typelabel updated
b	15.07.11	KOR/Lauer	new mechanical design
a	01.10.10	KOR/Lauer	approval added
	date	name	amendment

Dimensions tolerated according to ISO 2768-m				
Tolerance class	0,5	from 3 to 6	from 30 to 120	from 120 to 400
	3	to 6	to 30	to 400
m (middle)	±0.1	±0.1	±0.2	±0.5

drawn	03.06.10	Kornau	Kornau	scale	/
checked	03.06.10	Bremer	Bremer	format	A4
	date	name	signature		

order number 130B4118 drawing number Z791004013 mod. e sheet 1/1

Dimensions B 1002053 sine-wave filter 690V 115A - IP00 Please observe protection clause to ISO 16016